

WOLF PACK

TRAVEL TRAILER & FIFTH WHEEL
TOY HAULERS

TRAVEL TRAILER & FIFTH WHEEL
TOY HAULERS

WOLF PACK

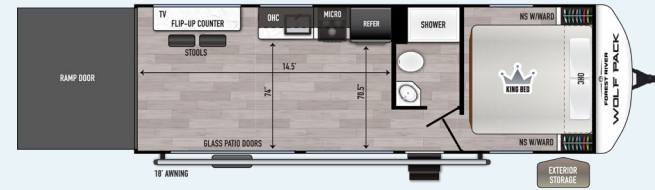


WOLF PACK

FIFTH WHEEL & TRAVEL TRAILER
TOY HAULERS

TRAVEL TRAILER

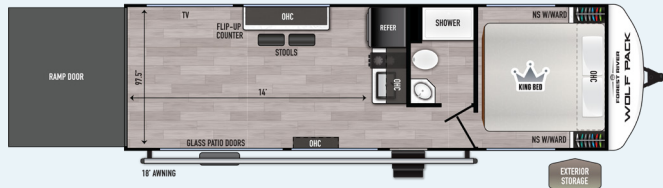
24-14.5



HITCH: 1,109 UVW: 6,344 CCC: 4,965 GVWR: 11,309 EXT. LENGTH: 29'3"
EXT. HEIGHT: 12'5" EXT. WIDTH: 102 TANKS (F/B/G): 96 44 44 AWNING: 18'

TRAVEL TRAILER

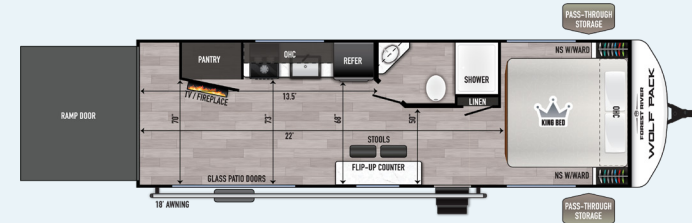
25-14



HITCH: 1,125 UVW: 6,518 CCC: 4,807 GVWR: 11,325 EXT. LENGTH: 30'5"
EXT. HEIGHT: 12'5" EXT. WIDTH: 102 TANKS (F/B/G): 96 44 44 AWNING: 18'

TRAVEL TRAILER

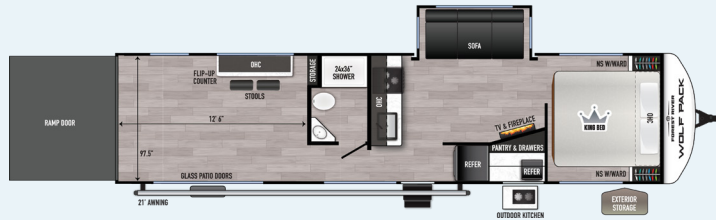
26-13.5



HITCH: 1,115 UVW: 6,688 CCC: 4,627 GVWR: 11,315 LENGTH: 31'9"
EXT. HEIGHT: 12'5" WIDTH: 102" TANKS (F/B/G): 96 44 44 AWNING: 18'

TRAVEL TRAILER

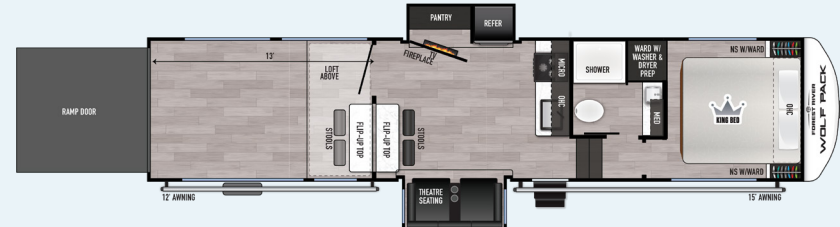
27-12.5



HITCH: 1,490 UVW: 8,988 CCC: 2,702 GVWR: 11,690 LENGTH: 37'11"
EXT. HEIGHT: 12'5" WIDTH: 102" TANKS (F/B/G): 96 44 44 AWNING: 21'

FIFTH WHEEL

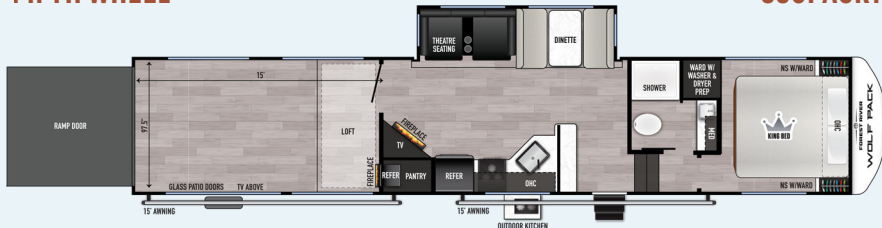
290PACK13



HITCH: 2,470 UVW: 11,173 CCC: 3,297 GVWR: 14,470 EXT. LENGTH: 39'5"
EXT. HEIGHT: 13'5" EXT. WIDTH: 102" TANKS (F/B/G): 96 44 44 AWNING: 12' / 15'

FIFTH WHEEL

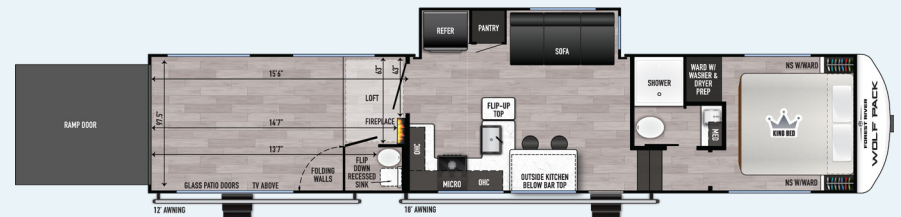
350PACK15



HITCH: 2,960 GVWR: 12,263 UVW: 4,697 CCC: 16,960 LENGTH: 45'
EXT. HEIGHT: 13'5" WIDTH: 102 TANKS (F/B/G): 96 44 88 AWNING: 15' / 15'

FIFTH WHEEL

365PACK15.5



HITCH: 2,910 UVW: 12,078 CCC: 4,832 GVWR: 16,910 EXT. LENGTH: 44'
EXT. HEIGHT: 13'5" EXT. WIDTH: 102" TANKS (F/B/G): 96 88 88 AWNING: 12' / 18'

WOLF PACK PACKAGES

LIMITED PACKAGE

2nd A/C 5th Wheel Bedroom
4 Camera Prep w/ Rear Camera
12 Volt Tank Pad Heaters
96 Gallon Fresh Water Capacity
Air Fryer Microwave
Cold Weather, 12 Volt Holding Tank Heat Pads
Forced Air Heated Underbelly & Enclosed Holding Tanks
Juice Pack Package (200 Watt)
Large Exterior Folding Grab Handle
Large 10 Cu/Ft. 12V Refrigerator
On Demand Tankless Water Heater
Power Front Landing Gear (5th Wheels)
Power Tongue Jack (TT only)*
Ramp Door Patio Deck Railing System (Fifth Wheels Only)
Rear Canvas Screen/Tent Wall
Washer/Dryer Prep (SELECT 5TH WHEELS)*
Wolf Pack Stable Step

WOLF PACK STANDARD EQUIPMENT

102" Widebody Design
5/8" Tongue and Groove Plywood Floors- Main Floor
50 Amp Service (2ND A/C PREP ON TT)
5,000 BTU Fireplace (Model Specific)*
Black Stainless Steel Farm Sink
External High Output LED Loading Light
Friction Hinge Door
Large 35,000 BTU Forced Air Ducted Furnace
Large Ducted 15,000 BTU Air Conditioner
LED Interior/Exterior Lights
Outside Shower With Hot And Cold Water
Power Awning w/LED Accent Lighting
Real Wood Cabinet Doors and Drawers
Roof Ladder Prep
Spare Tire

WOLF PACK OPTIONAL EQUIPMENT

(TT) 2nd A/C
(TT) Ramp Door Patio Deck Railing
(TT) West Coast Power Package (30 Gallon Fuel Station & Full Gen Prep)
(TT) 6000-Watt Generator
(FW) 2nd Awning
(FW) West Coast Power Package (30 Gallon Fuel Station & Full Gen Prep)
(FW) 6000-Watt Generator



OUR COMMITMENT TO YOU.

When it comes to backing products with the same quality and commitment it does when it begins the manufacturing process, the only name you have to remember when you're looking for a recreational vehicle is Wolf Pack.



WOLF PACK

EACH NEW FOREST RIVER PURCHASE PROVIDES:

- ✓ Pre-delivery Inspection.
- ✓ Digital Owner's Manual.
- ✓ Free Membership to Forest River Owners Group (FROG).
Learn more at www.forestriverfrog.com.
- ✓ A Contribution to Care Camps Foundation www.carecamps.org.
- ✓ 1 Year Free Roadside Assistance from Date of Purchase.



SPEC DEFINITIONS:

Scan on your smartphone to learn RV terminology and more!



LEARN MORE:

Scan this QR code with your mobile device to learn more about Forest River.



YOUR **WOLF PACK** DEALER

All information contained in this brochure is believed to be accurate at the time of publication. However, during any model year, it may be necessary to make changes to the manufacturing process of the units and information in this brochure. Your unit may differ from the information in this brochure due to any changes in the manufacturing process and equipment. Forest River, Inc., reserves the right to make all such changes without notice, including prices, colors, combinations, materials, equipment and specifications of any model as well as the addition of new models and the discontinuance of models shown in this brochure. Therefore, please consult with your Forest River dealer and confirm the availability of any materials, combinations, designs, or specifications that are meaningful to your purchase decision.
© 2024 Wolf Pack, a Division of Forest River, Inc., a Berkshire Hathaway Company. All Rights Reserved. Forest River, Inc. 11/24